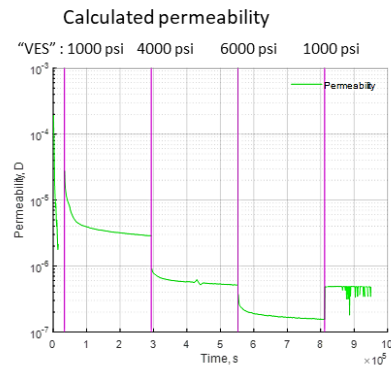
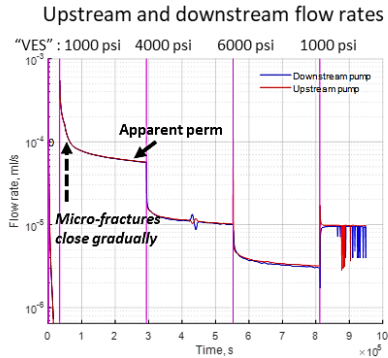
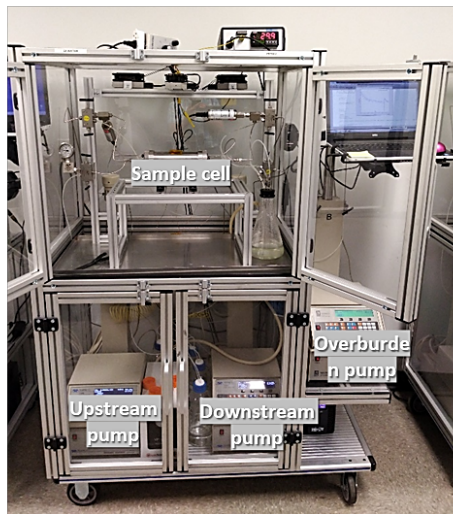


Permeability

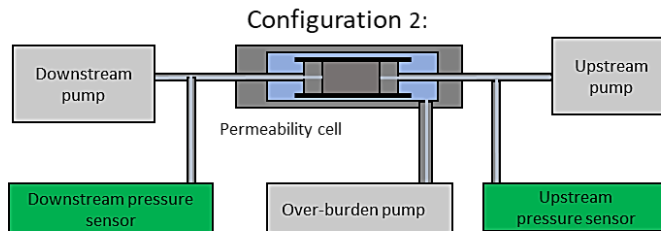
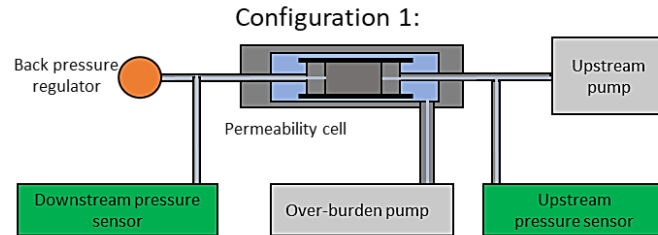
Acquired data



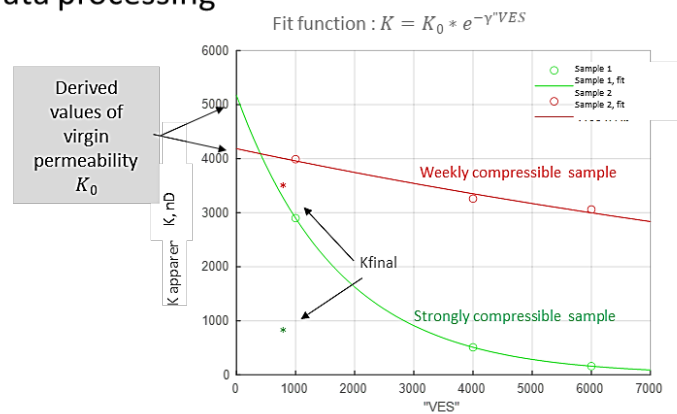
Custom hardware components



Steady-state permeameter



Data processing



- Upstream and downstream pumps are used to perform permeability experiment using fixed pressure difference across the sample
- Soft rubber boot to avoid sample heating and by-pass artifacts during perm measurements
- 2 sets of pressure sensors enabling extended measurement permeability range (from 10 nD to 0.5 D)
- HC or brine liquid can be used for measurements
- Multiple values of VES can be used during single permeability experiment to estimate permeability degradation during reservoir depletion